

EO ✓
AEO ✓
RF ✓
GNSS ✓
RAY ✓

SE-AGETIM-LIGHT



LIGHT 3D TERRAIN GENERATION TOOL

FAST ✓

SE-AGETIM-LIGHT is a simple standalone software that enables easy 3D environment generation that can be used for sensor simulation.

SE-AGETIM-LIGHT allows integration of various geographical data sources. Some physical database extensions mechanisms are also provided for a highly automated multi sensor generation process

Features

- Automatic 3D terrain generation software for multi sensors simulation use (EO, and RF domains)
- Based on GlobalMapper® SDK
- Can load several geographical digital data format of the civilian and defence market
- Simple generation of 3D terrain
- SE-AGETIM and SE-WORKBENCH compatibility
- Templates library included
- On demand customizable GUI

Source Data Manipulation Made Easy

The light modeller performs automatic treatments on source data at import time.

Different data types and formats are supported, among which:

Elevation data

- DTED or GeoTiff terrain grids
- Terrain lines

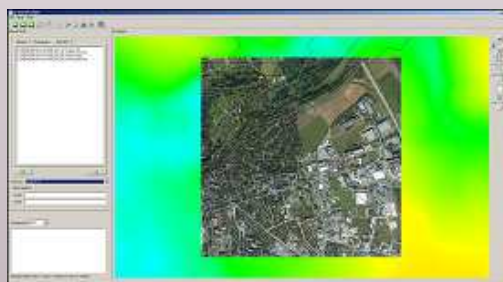
Features data (vector information)

- IGN BDTOPO Shapefiles
- OpenStreetMap®
- Corine Land Cover

Photos (raster information)

- Satellite or aerial images in Geotiff

GlobalMapper® SDK (provided by Blue Marble Geographics) allows trustworthy support of many data sources and virtually any coordinate systems.



Airbone photo and altimetry import capacity

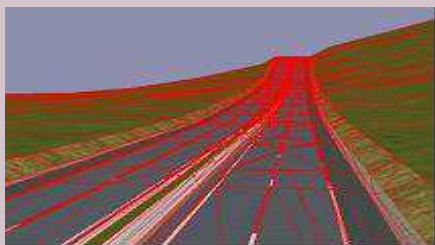
SE-AGETIM-LIGHT provides editing features: modify geometry, change attributes values, add attributes, check altimetry...



Planimetric features edition

Benefits

- **Ease of use:** Standalone application. Included multi-domain database
- **Customizable:** On demand GUI modification. Possibility to generate data from more source format
- **Interoperability:** Compatible with SE-WORKBENCH simulation tools, and SE-AGETIM for improvement



System requirements



Generation Made Simple

SE-AGETIM-LIGHT adds dedicated algorithms for data cleansing and automatic mapping, in order to perform suitable generation.

Too complex data are simplified, or ignored, so that the generation process runs smoothly.

Generation parameters are gathered on a single window which can be adapted to specific customer needs: ask us!

SE-AGETIM Expertise

SE-AGETIM-LIGHT relies on SE-AGETIM terrain modeller engine, and thus benefits from its twenty-years experience and most of the advanced generation mechanisms.

Any database produced by SE-AGETIM-LIGHT is fully SE-AGETIM compatible. "First shot" result of the light modeller can be enhanced with the full modeller package.

Templates Library

SE-AGETIM-LIGHT comes with templates library that lead to realistic generic databases, ready for SE-WORKBENCH simulation tools.

Multi-texturing

The library takes advantage of multi-texture methods, and provides detail texture both on generic templates and aerial photo.

The Multi Sensors Enhancement

SE-AGETIM-LIGHT templates database is not only defined for visible domain, but also IR and RF domains.

At the end of the terrain generation process the virtual 3D scene is ready for a spectral analysis.

Internal Visible Domain Viewer

The product comes with an integrated 3D viewer.



OKTAL-SE

11 avenue du Lac 31320 Vigoulet-Auzil France

Phone: +33 (0)5 67 70 02 00 - Fax: +33 (0)5 67 70 02 05

Mail: contact@oktal-se.fr website: www.oktal-se.com